

# GLOBAL EAST ASIA TECHNOLOGY CO.,LTD

Product name: Wall Mount Antenna GLW0727S8



## Applications:

1. Indoor distributed antenna system

## Features:

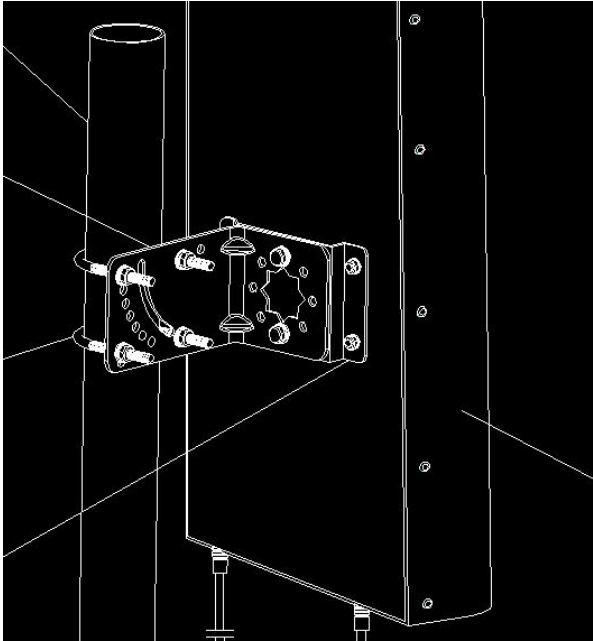
1.Light weight, small size

2.Anti-ultraviolet ABS radome

Electrical Specifications		
Frequency Range-MHz	698-960	1710-2700
Polarization	±45°	
VSWR	≤2.0	≤1.5
Gain -dBi	≥7	≥8
Horizontal beam width	75°	70°
Vertical beam width	70°	55°
Front-to-back ratio-dB	≥15	≥25
Isolation between ports-dB	≥22	
Input Impedance -Ω	50	
Maximum input power-W	200	
Lightning protection	DC Ground	
Mechanical Specifications		
Input connector type	2×SMA straight male	
Installation	Wall and pole	
Dimensions-mm	325×205×70	
Antenna weight -KG	1.5	
Radiating Element Material	Al	
Radome material	ABS	
Radome color	White	
Operating temperature	-40°C to +65 °C	

# GLOBAL EAST ASIA TECHNOLOGY CO.,LTD

Drawing For outdoor



Drawing for indoor

