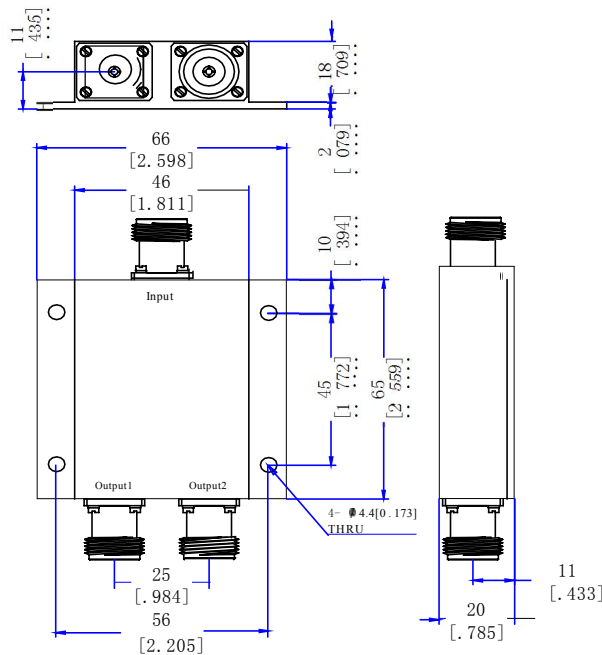




GLMPD2N

2-Way Power Divider Specifications

SN	Parameters	Specifications
1	Frequency Range	698~3800 MHz
2	Insertion Loss	≤ 0.8dB (Excluding theoretical loss 3.0dB)
3	Input Port VSWR	Typ.1.11 / Max.1.25
4	Output Port VSWR	Typ.1.10 / Max.1.20
5	Isolation	Typ.26dB / Min.20dB
6	Amplitude Balance	±0.2dB
7	Phase Balance	±3°
8	Impedance	50 Ohms
9	Input/Output Connectors	N-Female;
10	Power Rating	Splitter 50W; Combiner 3W
11	Operation Temperature	-30°C ~ +85°C
12	Surface Finishing	Sandblasting natural color conductive oxidation
13	Outline Dimensions	65*66*20 (mm)
14	Weight	100 (g)



Note: Dimensions (mm / [inch]), General tolerance (±0.3)