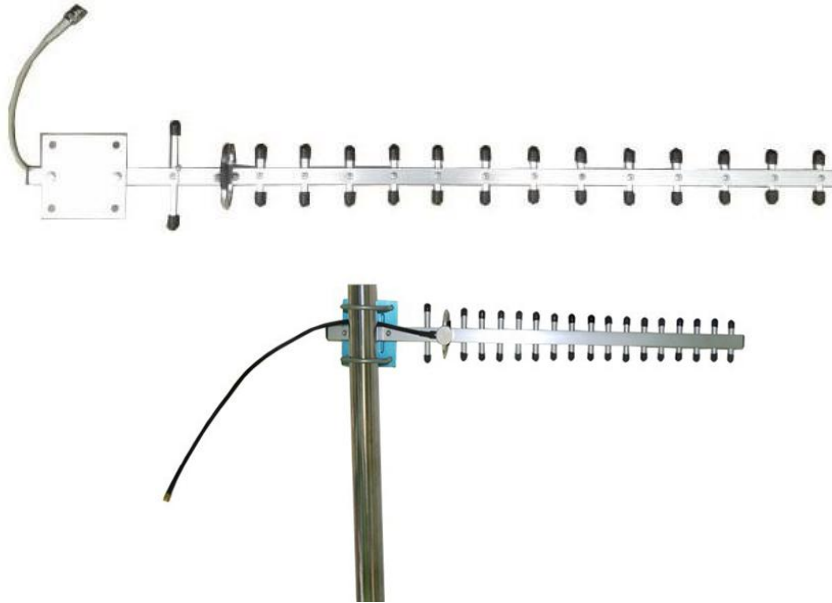




# GLOBAL EAST ASIA TECHNOLOGY CO.,LIMITED

## 3G Yagi Antenna GL1722V15



Electrical Specifications	
Frequency Range-MHz	1710-2170
VSWR	≤1.5
Gain-dBi	15
Horizontal beam width-°	50
Vertical beam width-°	42
Front-to-back ratio-dB	≥17
Polarization	Vertical
Input Impedance-Ω	50
Maximum input power-W	50
Lightning protection	DC Ground
Mechanical Specifications	
Input connector type	N-K
Installation	Pole-holding
Dimensions-mm	760
Antenna weight-KG	0.5
Radiating Element Material	Al
Operating temperature	-40°C to +70 °C

Add: Room 826, Block B,BLDG 18, University Science Park(East), Zhengzhou City,P.R.Henan,China.

Tel: 86-371-60911368 Email:info@global-antenna.com

Web:<http://www.asialeren.com> <http://www.global-antenna.com>



# GLOBAL EAST ASIA TECHNOLOGY CO.,LIMITED

---

---

Add: Room 826, Block B,BLDG 18, University Science Park(East), Zhengzhou City,P.R.Henan,China.  
Tel: 86-371-60911368 Email:info@global-antenna.com  
Web:<http://www.asialeren.com> <http://www.global-antenna.com>

---

---