



GLOBAL EAST ASIA TECHNOLOGY CO., LIMITED

Product Name: Directional Panel Antenna

Product Model: GL0642B



Application

Used in 2G/3G/4G/5G/WLAN system

Frequency range (MHz)	61~698	69~960	169~2700	330~4200
Polarization	Vertical			
Gain (dBi)	6	7	8	9
Horizontal beam width (°)	90	80	75	55
Typical Vertical beam width (°)	75	80	70	50
Front-to-back ratio (dB, avg.)	14	16	25	20
Impedance (Ω)	50			
VSWR	≤1.8			
Intermodulation IM3 (2×43dBm carrier)	-153dBc	-153dBc	-153dBc	-153dBc
Maximum power (W)	50			
Lighting protection	DC Ground			
Mechanical specifications				
Connector	4.3-10 Female or N Female			
Exposed cable size (cm)	30			
Connector position	Bottom			
Antenna size (mm)	306*250*86			
Packing size (mm)	455*260*113			
Weight (kg)	≤1.5			
Radome material	ABS			
Radome color	White (RAL 9003)			
Operating temperature (°C)	-40~60			
Application	Outdoor			
Mechanical tilt (°)	Adjusting Elevation 0~20/Adjusting Turn ±45			
Rated wind velocity (m/s)	40			
Suitable pole diameter (mm)	Φ35~Φ125			
Mounting kit	JM-VB8			

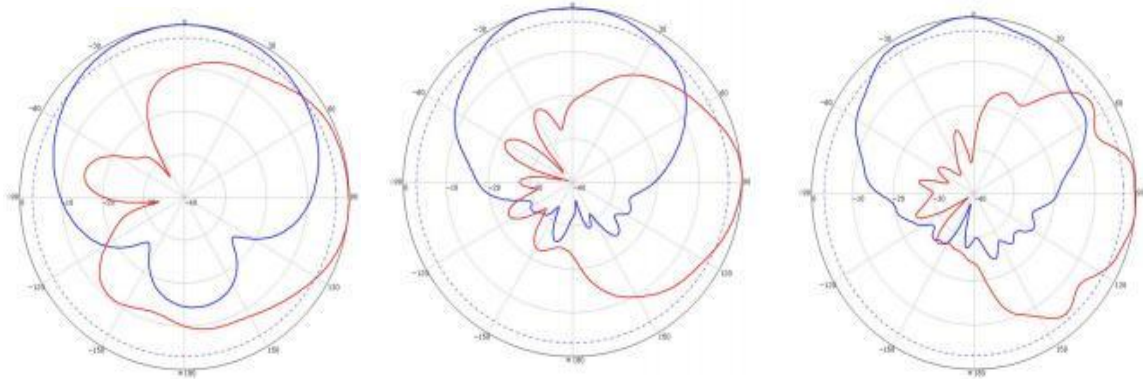
Add: Room826, Floor 8, BLDG 13, University Science Park(East), Zhengzhou City, P.R.Henan, China.

Tel: 86-371-60911368 Email: info@global-antenna.com

Web: <http://www.asialeren.com> <http://www.global-antenna.com>

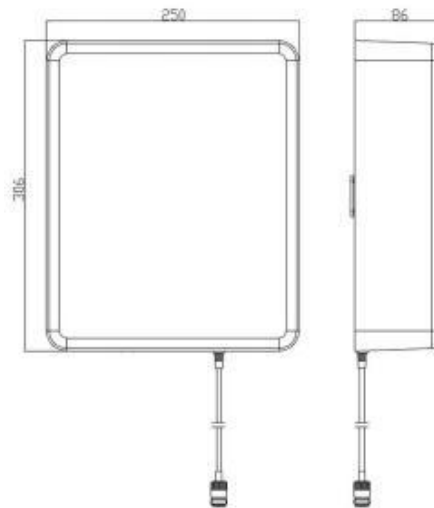


617~960MHzTypical pattern: 1695~2700MHzTypical pattern: 3300~4200MHzTypical pattern

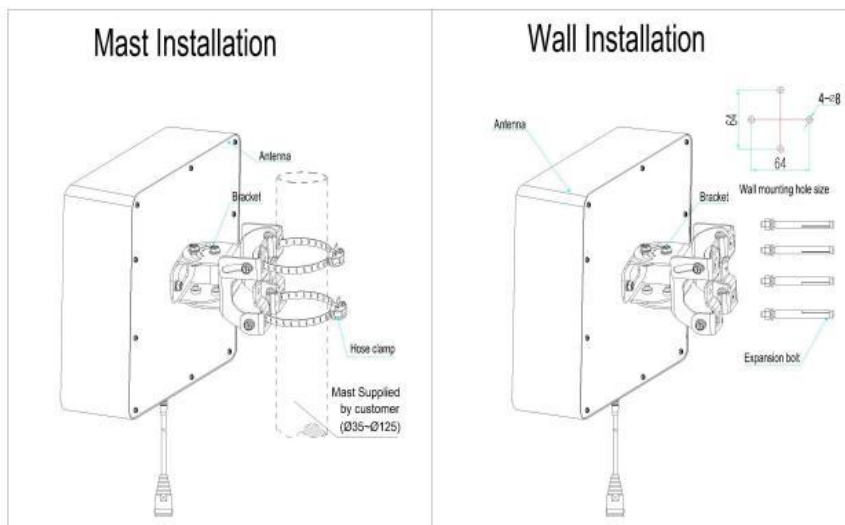


Product pictures

Product size



Installation Sketch



Add: Room826, Floor 8,BLDG 13, University Science Park(East), Zhengzhou City, P.R.Henan, China.
Tel: 86-371-60911368 Email:info@global-antenna.com
Web:http://www.asialeren.com http://www.global-antenna.com