

ZHENGZHOU LEHENG ELECTRONIC TECHNOLOGY CO.,LTD

900-950/1170-1280/1350-1450/1560-1620/2400-2485/5150-5850MHz 7 Ports Panel Antenna

PN: G960PB071214FT

Electrical Specifications

| | | | | | | | |
|------------------------------|----------|-----------|-----------|-----------|-----------|-----------|-----------|
| Fre.Range (MHz) | 840-930 | 1170-1280 | 1400-1470 | 1500-1620 | 2400-2483 | 5150-5350 | 5725-5850 |
| Horizontal 3dB Beamwidth (°) | 75±5 | 75±5 | 90±10 | 120±10 | 90±10 | 120±10 | 120±10 |
| Vertical 3dB Beamwidth (°) | 65±5 | 60±5 | 60±5 | 60±5 | 17±5 | 17±5 | 17±5 |
| Gain (dBi) | 7±1 | 8±1 | 7.5±1 | 7±1 | 14±1 | 13±1 | 13±1 |
| Polarization | Vertical | Vertical | Vertical | Vertical | Vertical | Vertical | Vertical |
| VSWR | ≤1.5 | ≤2.0 | ≤2.0 | ≤2.0 | ≤1.5 | ≤1.5 | ≤1.5 |
| Front to Back Ratio (dB) | ≥20 | | | | | | |
| Average Power, Maximum (W) | 100 | | | | | | |
| Impedance (Ω) | 50 | | | | | | |

Mechanical Specifications

| | |
|-----------------|-------------|
| Dimensions (mm) | 730×320×110 |
| Net Weight (kg) | 10 |
| Radome | UPVC |
| Radome Colour | Gray |
| Connector | 7×NK |

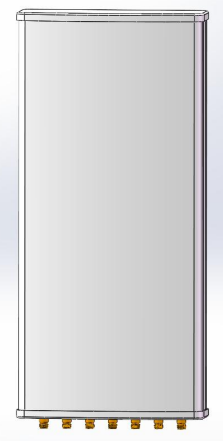
Environmental Specifications

| | |
|------------------------------|---------------------------|
| Application | Outdoor |
| Operating Temperature (°C) | -40 to +70 (-40 to 158°F) |
| Humidity (%) | 5 to 95 |
| Survival Wind Velocity (m/s) | 60 |

Mounting Specifications

MOUNTING BRACKETS ARE INCLUDED UNLESS OTHERWISE SPECIFIED

| | |
|-----------------------------|------------|
| Mounting Mast Diameter (mm) | Φ 35 to 75 |
|-----------------------------|------------|



Add: Room 826, Block B,BLDG 18, University Science Park(East), Zhengzhou City,P.R.Henan,China.

Zip Code: 450051

Tel: 86-371-60911368

Email: sales@global-antenna.com